

 ShenGang Street, Jiayangin City, Jiangsu, China

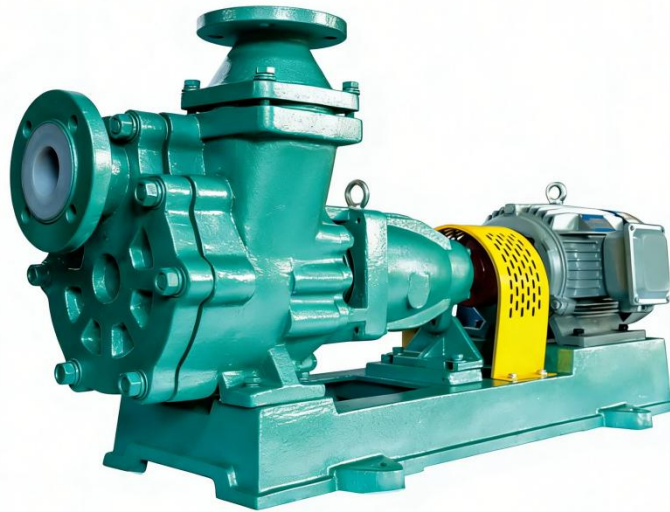
 info@virheos.com, julian@virheos.com
contact@virheos.com

 +86 18118922905

<https://virheos.com>

FZB

**FLUORINE PLASTIC LINING
SELF-PRIMING CENTRIFUGAL PUMP**



- **Working Conditions**

Pump Diameter :25-100mm

Working Temperature:-20-150 °C

Flow Capacity Range:2.5m³/h-100m³/h

Pump Head Range:15m-150m

Materials Range:Lining F46/PFA

Designed Standard:GB/T5662,ISO2858,EN733/DIN24255

- **Application Fields**

Biological medicine,petrochemical, mining,metallurgy,textile printing and dyeing,electricity,food,papermaking, electroplating,sewage treatment,flue gas treatment,new energy,new materials and other industries.

- **Pump Usage**

Suitable for chemical industry level below the pump suction process,neutral or corrosive,low or high temperature(150°C),liquid solid particles content lower than 5%.Can be resistant to all stainless steel to resist corrosion medium,instead of the expensive titanium alloy,monel alloy material,such as pump.

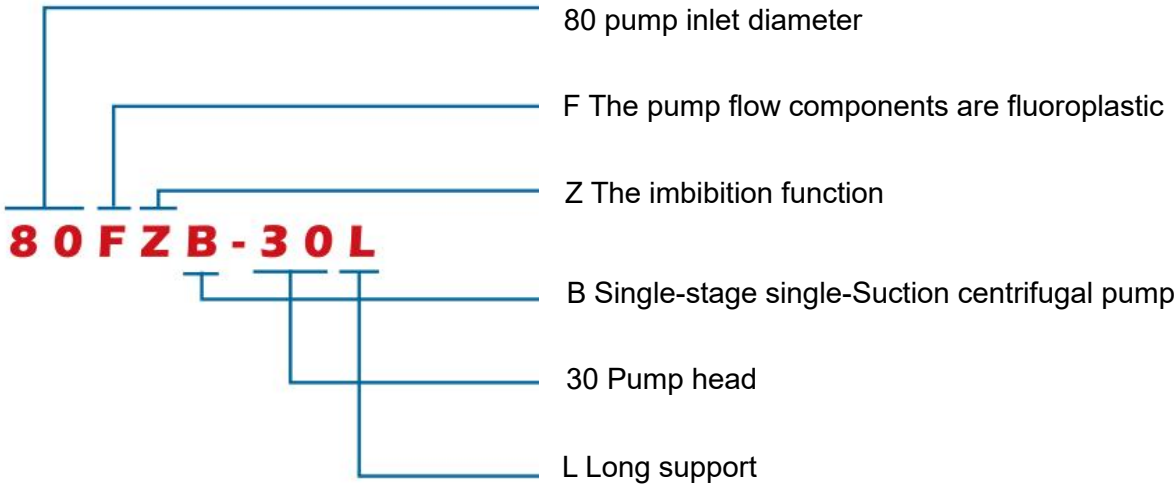
- **Designed Instruction**

The FZB series fluoroplastic self-priming centrifugal pumps are the latest corrosion-resistant products developed by our company, based on traditional ZX and ZW self-priming centrifugal pumps, incorporating our IHF lined fluoroplastic centrifugal pump technology. This pump not only retains the self-priming function and performance of the ZX and ZW series but also enhances the pump's corrosion resistance. Its flange design conforms to international standards. The shaft seal employs an externally mounted advanced bellows mechanical seal, enabling a self-priming height of up to 4 meters. If equipped with a check bottom valve, the self-priming height can be further increased to 1-3 meters. For initial use, only a small amount of liquid needs to be injected into the pump casing; operation can commence once the liquid level reaches 1.5 meters. Selecting this pump as an alternative to submersible electric pumps offers significant advantages, including cost-effectiveness, convenient maintenance, extended service life, and low operating costs.

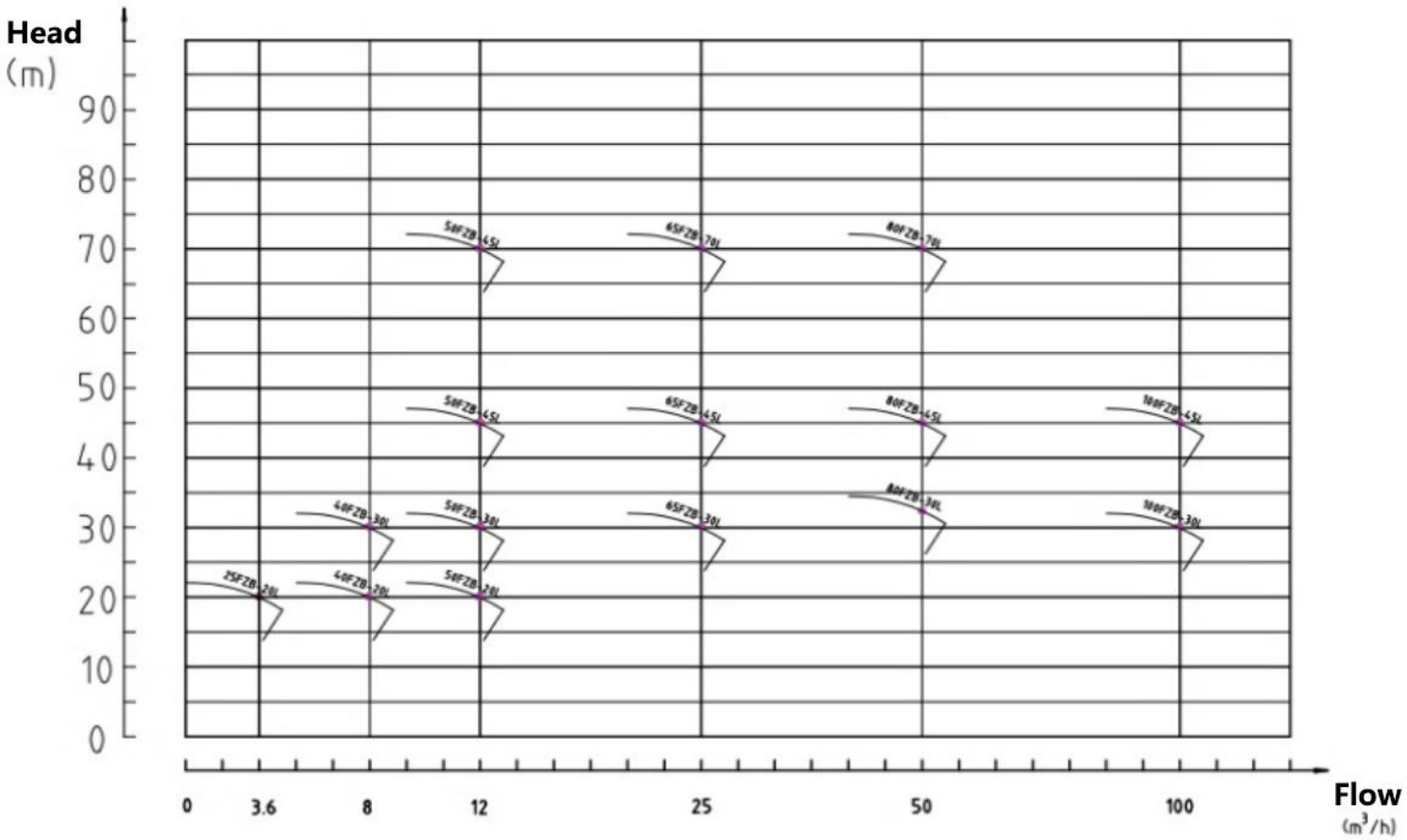
Performance Parameter Table

Model No	Fow Capacity (m³/h)	Pump Head (m)	Motor Power (KW)	Roang Seed (r/min)	Self-Priming Height (m)	Self-Priming Time (S)	Efficiency (%)	NPSH (m)	Diameter (mm)	
									Inlet	Outlet
25FZB-20LP	1.5	19	2.2	2900	0.7	180	10	3	25	25
	3.6	18					20			
	6	16					25			
40FZB-20P	5	22	3	2900	1	180	35	3	40	50
	8	20					42			
	12	17					46			
40FZB-30L	5	32	4	2900	3	150	34	3.5	40	50
	8	30					48			
	12	28					45			
50FZB-200	8	22	3	2900	1	180	35	3	50	50
	12	20					42			
	15	17					40			
50FZB-30L	8	32	4	2900	3	150	24	3.5	50	50
	12	30					29			
	15	28					30			
50FZB-45L	8	47	7.5	2900	3	150	24	3.5	50	40
	12	45					35			
	15	43					32			
50FZB-70L	8	72	15	2900	3	150	20	4	50	32
	12	70					26			
	15	68					23			
65FZB-30L	15	32	7.5	2900	3	200	37	4	65	50
	25	30					42			
	35	27					41			
65FZB-45L	15	47	11	2900	3	180	30	4	65	40
	25	45					42			
	35	38					44			
65FZB-70L	15	72	22	2900	3	180	30	4	65	40
	25	70					41			
	35	65					42			
80FZB-30L	35	35	11	2900	3.5	180	51	4.5	80	65
	50	32					63			
	60	28					56			
80FZB-45L	35	47	15	2900	3.5	200	45	4.5	80	65
	50	45					53			
	60	42					48			
80FZB-70L	35	72	30	2900	3.5	250	45	5	80	50
	50	70					50			
	60	65					43			
100FZB-30L	65	32	18.5	2900	3.5	200	56	6	100	80
	100	30					80			
	110	28					64			
100FZB-45L	65	46	30	2900	4	250	48	6	100	80
	100	45					55			
	110	40					48			

Model significance



Performance Curve



Three dimensional figure and material structure

